

# AGM Presentation November 2018

**Gold Mountain**  
Limited  
ASX code: GMN

# DISCLAIMER

This presentation is for information purposes only. Neither this presentation nor the information contained in it constitutes an offer, invitation, solicitation or recommendation in relation to the purchase or sale of shares in any jurisdiction. This presentation may not be distributed in any jurisdiction except in accordance with the legal requirements applicable in such jurisdiction. Recipients should inform themselves of the restrictions that apply in their jurisdiction. Failure to do so may result in a violation of laws in such jurisdiction. This presentation does not constitute financial product advice and has been prepared without taking into account the recipient's investment objectives, financial circumstances or needs and the opinions and recommendations herein are not intended to represent recommendations of particular investments to particular persons. Recipients should seek professional advice when deciding if an investment is appropriate. All securities transactions involve risks, which include (among others) the risk of adverse or unanticipated market, financial or political developments

## Forward Looking Statement

Whilst based on information from sources considered reliable, Gold Mountain Limited (GMN), its directors, employees and consultants do not represent, warrant or guarantee, expressly or impliedly, that the information in this document and presentation is complete or accurate. To the maximum extent permitted by law, GMN disclaims any responsibility to inform any recipient of this document and presentation of any matter that subsequently comes to its notice, which may affect any of the information contained in this document and presentation.

## Competent Person Statement

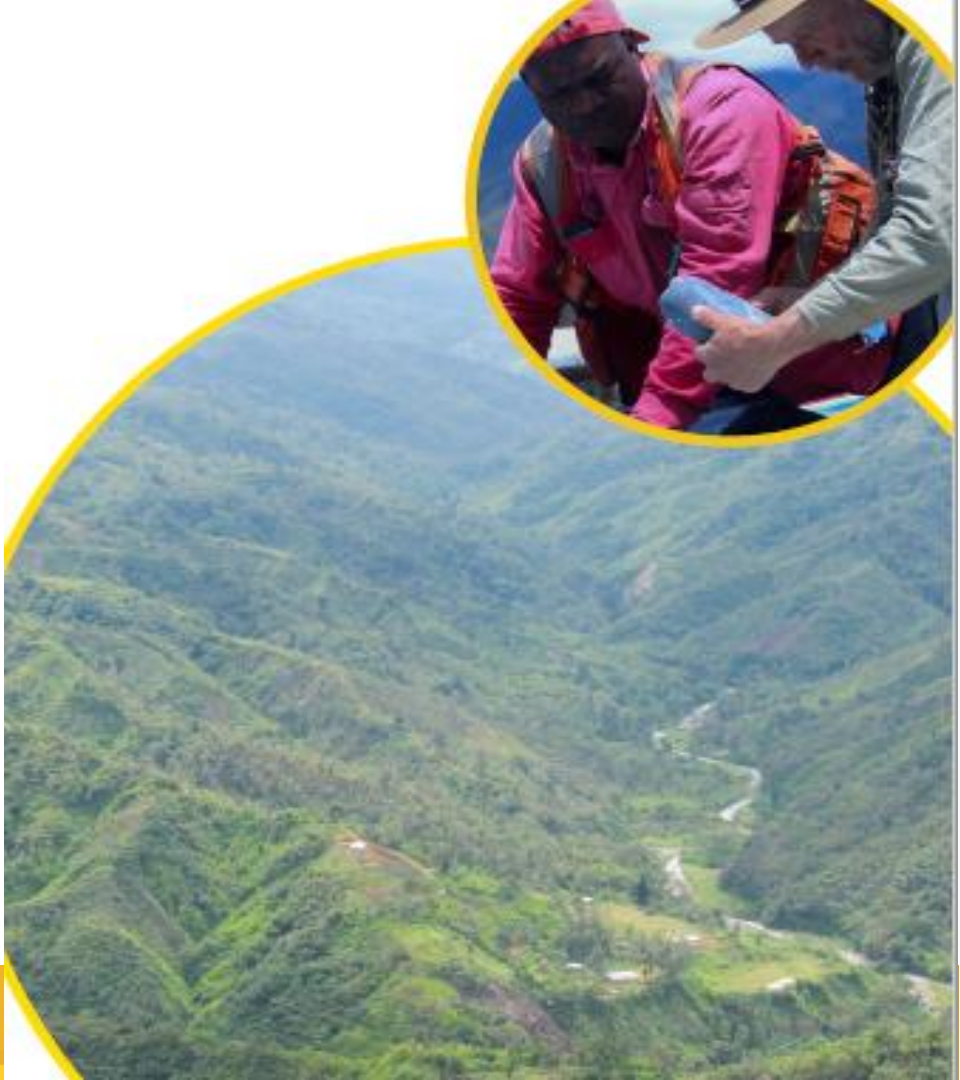
The information in this report that relates to Exploration Results is based on information compiled by Doug Smith, a Competent Person who is a member of the Australasian Institute of Mining and Metallurgy (AusIMM). Mr Smith is a consultant geologist who is employed in a full-time capacity by Gold Mountain. Mr Smith has sufficient relevant experience that is relevant to the style of mineralisation and type of deposit under consideration and the activity being undertaken to qualify as a Competent Person as defined in the Australasian Code for Reporting of Exploration Results, Mineral Resources and Ore Reserves 2012. Doug Smith consents to the inclusion in this report of the matters based on his information in the form and context in which it appears.

# PRESENTATION OUTLINE

- Company Overview
- Company Structure and Key Personnel
- Key Achievements 2018
- Wabag Project Summary
- Mongae Creek Prospect
- Crown Ridge Prospect
- Sak Creek Prospect
- K-lam Prospect
- Project Pipeline and Budget
- Q & A

# COMPANY OVERVIEW

- Gold Mountain Limited (GMN) is an Australian mineral exploration and development company listed on the ASX.
- Gold Mountain's principal exploration project is in Papua New Guinea (PNG).
- Exploration licences cover an area of over 2000 km<sup>2</sup> in one of the most underexplored regions of PNG.
- Flagship Wabag Project has four high-calibre targets, each with significant potential:
  - Mongae Creek: target = large porphyry copper-gold system
  - Sak Creek: target = large porphyry copper-gold system
  - Crown Ridge: target = high-grade epithermal gold and platinum
  - K-lam: new copper-gold prospect
- Early exploration success confirms the potential for the discovery of world-class mineral deposit(s) on the scale of the giant Porgera (gold) and Ok Tedi (copper-gold) mines.



# KEY PERSONNEL

STRONG TECHNICAL TEAM WITH PNG EXPERIENCE, REPUTATION AND RECORD OF DISCOVERY



Tony Teng  
Managing Director

B.Econ

*Mr Teng has over 30 years of experience in management and corporate restructuring with a focus on capital raising. He was co-founder and director of Coalworks Ltd, which was acquired by Whitehaven in 2012 in a \$200m takeover bid.*



Douglas Smith  
Operations Director

B.Geo MAusIMM

*Mr Smith has a 27-year career working on major precious metal deposits in Canada, Alaska and Australia. Since 2011 he has worked on major PNG projects including the Ok Tedi mine and Highland Pacific's Star Mountain exploration tenements.*



Graham Kavanagh  
Chairman

B.Com

*Mr Kavanagh has over 25 years of experience in securities and fund management, mining and property investment and development. He held senior positions as Securities Analyst, General Manager and Director in fund management and property investment.*



Eric Kam  
Company Secretary

MBA

*Mr Kam has extensive experience in finance and operations management across diverse businesses and industries including engineering, construction and mining & resources. Mr Kam is also on the board of several other companies*

# SHARE STRUCTURE

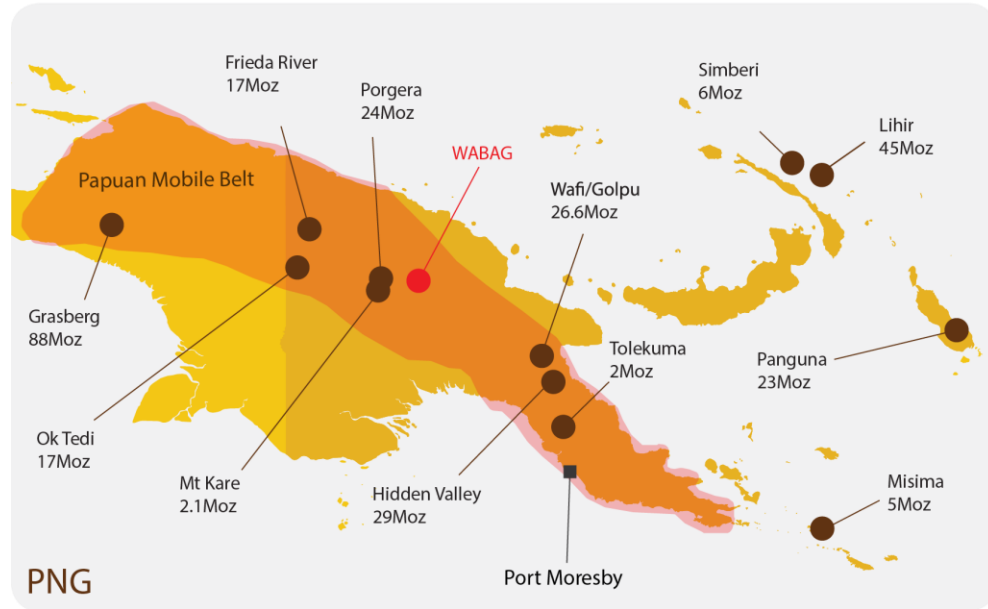


1 Day | 1 Week | 1 Month | 1 Year | 5 Year | [Advanced Chart](#)

GMN CAPITAL STRUCTURE	
Market cap at \$0.080 undiluted	\$41.21m
52 week high	\$0.16
52 week low	\$0.073
Top Shareholdings	
Top 10	34.6%
Board & Management	
Managing Director	Sin Pyng (Tony) Teng
<i>Expertise in project development and corporate restructuring, as well as experience surrounding investor relations</i>	
Exploration Director	Doug Smith
<i>Experience as an economic exploration geologist with technical &amp; managerial roles in copper and gold resources, both globally and within PNG</i>	

# PRIME LOCATION

- Gold Mountain's Wabag project is located in the heart of the highly prospective, gold-copper endowed Papuan Mobile Belt.
- This orogenic belt is host to many world-class deposits including Porgera (24 Moz), Ok Tedi (17 Moz), Frieda River (17 Moz) and Hidden Valley (29 Moz).
- Despite its favourable geological setting, this sought-after licence area has long remained underexplored due to its location in a dense rainforest.
- Having recognised the area's tremendous potential early on, Gold Mountain is the first company to investigate it using modern technology.





# EXPLORATION LICENCES

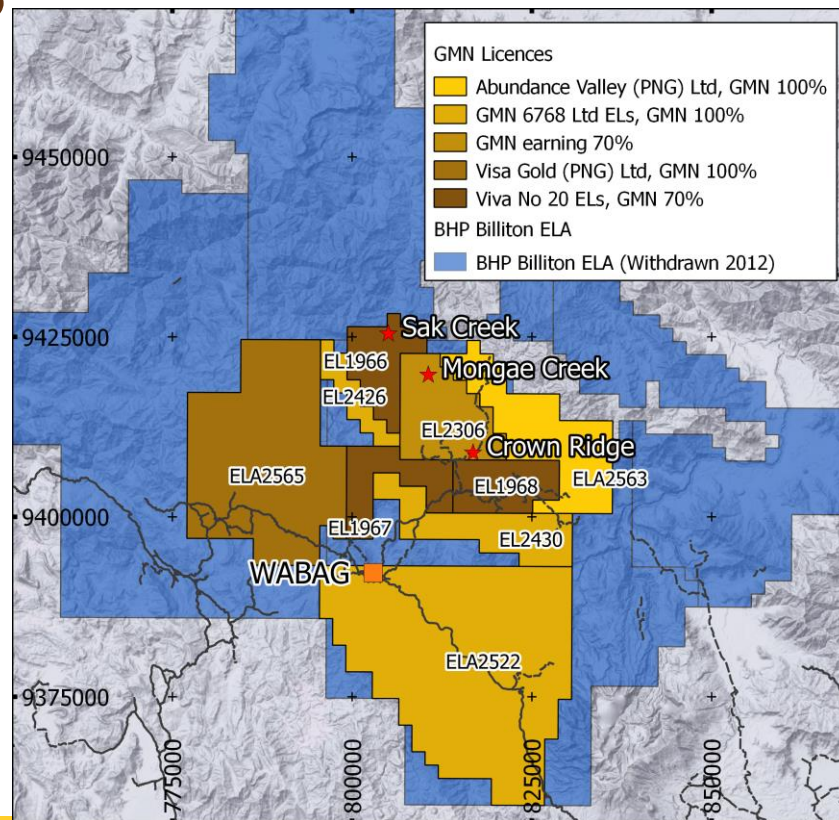
- Gold Mountain holds a land area of over 2,000 km<sup>2</sup>, contained within six Exploration Licences (EL) and three Exploration Licence Applications (ELA).
- Before being secured by Gold Mountain, these licences were also under application by one of the world's largest mining companies, a significant testimony to the area's high potential.

Tenure	Area <sup>1</sup> (km <sup>2</sup> )	Interest	Expiry Date <sup>2</sup>	Commitment (Kina) <sup>3</sup>
EL1966 Sak Creek	103	70%	26/06/2017	200,000
EL1967 Pocket Creek	103	70%	27/11/2017	200,000
EL1968 Crown Ridge	103	70%	27/11/2017	200,000
EL2306 Alakula	164	70%	13/12/2017	200,000
EL2426 Keman	48	100%	27/05/2018	100,000
EL2430 Meriamanda	154	100%	27/05/2018	100,000
ELA2522	841	Application, GMN 6768 (PNG) Limited		
ELA2563	226	Application, Abundance Valley (PNG) Limited		
ELA2565	537	Application, Viva Gold (PNG) Limited		

<sup>1</sup> Renewed Areas

<sup>2</sup> Renewal pending. Warden's hearings about the renewal and granting of the licence applications were held on October 12 2018. Communities were welcoming and expressed no objections against Gold Mountain's applications.

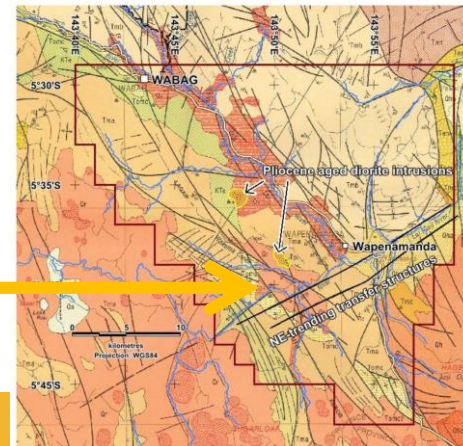
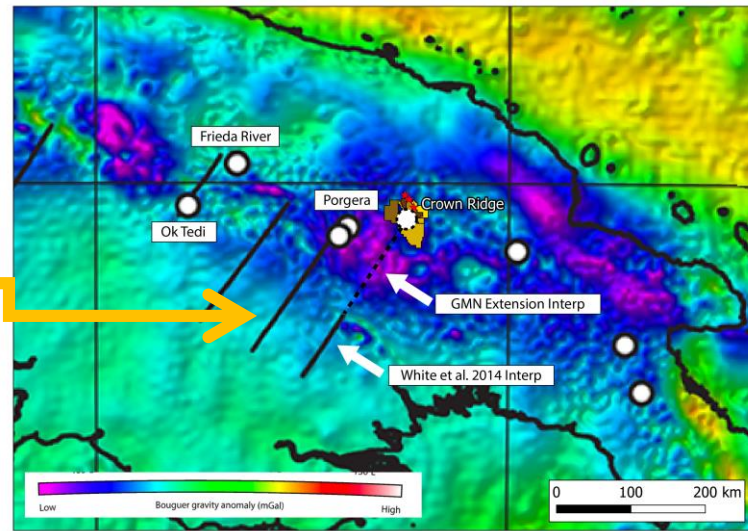
<sup>3</sup> Expenditure commitment in PNG Kina. As at 24 Aug 2018, 1 Kina = A\$0.41.





# UNEXPLORED LINEAMENT

- Two world-class mines adjacent to GMN tenements are positioned on or near large north-east trending structural lineaments.
- These orogen-scale lineaments are widely believed to focus heat, intrusives and fluid flow, thereby significantly increasing the potential for economic gold and copper mineralisation to occur.
- High-grade gold occurrences have been discovered by Gold Mountain over an extended area, regional mapping by the Geological Survey and regional-scale geophysics all support the notion that Gold Mountain may be tapping into another, underexplored north-east trending lineament.



# PNG: AN ATTRACTIVE DESTINATION FOR MINING INVESTMENT

- Exceptional mining destination
- Major gold mine Porgera 75km away from GMN tenements
- Excellent and secure tenement system
- Wabag District has key infrastructure including
  - Road link to coast
  - Road to main Crown Ridge prospect
  - Power
  - Water
  - Airport and mining support services
  - Strong mining labour force
- Based on prospectivity, sovereign stability, mining regulations and labour force availability, PNG is rated by the prestigious Fraser Institute as being a more attractive destination for mining investment than Botswana, New Zealand, NSW, Ecuador, Peru, Brazil, Zambia, Tanzania, Columbia, Bolivia, Mongolia, Mexico and Victoria

(<https://www.fraserinstitute.org/studies/annual-survey-of-mining-companies-2017>)

# 2018 KEY ACHIEVEMENTS

- Drilled 2 diamond holes at Mongae Creek for 877 m which intersected a mineralised copper – porphyry system
- Completed a 19-hole diamond drilling programme at Crown Ridge for 2,768 m, showing secondary hydrothermal alteration of conglomerates
- Identified a new and exciting mineralisation at K-lam which has returned assay results from outcrop grading 2.01 g/t Au and 0.4% Cu
- Held successful Mining Wardens Hearings for the renewal of existing licence and for the grant of three new licences



# MONGAE CREEK

- Field work has identified abundant coarse, angular and crystalline gold in the drainage system of a small valley where local miners are consistently recovering alluvial gold.
- Classic porphyry-style alteration and veining were encountered during a mapping campaign of these creeks and outcrop exposure puts the whole system at a scale of 1.6 by 1.2 km.
- Samples recovered from mineralised outcrop and proximal rock float samples retrieved from the creeks have returned grades of up to 0.6 % Cu and 0.44 g/t Au.
- Gossanous, hydrothermally brecciated diorite is found in outcrop and as float in the creeks. These rocks are crushed by locals to yield free gold.
- Gold Mountain has commenced a detailed surface soil sampling programme over the entire catchment area to assist in the next phase of targeted drilling.



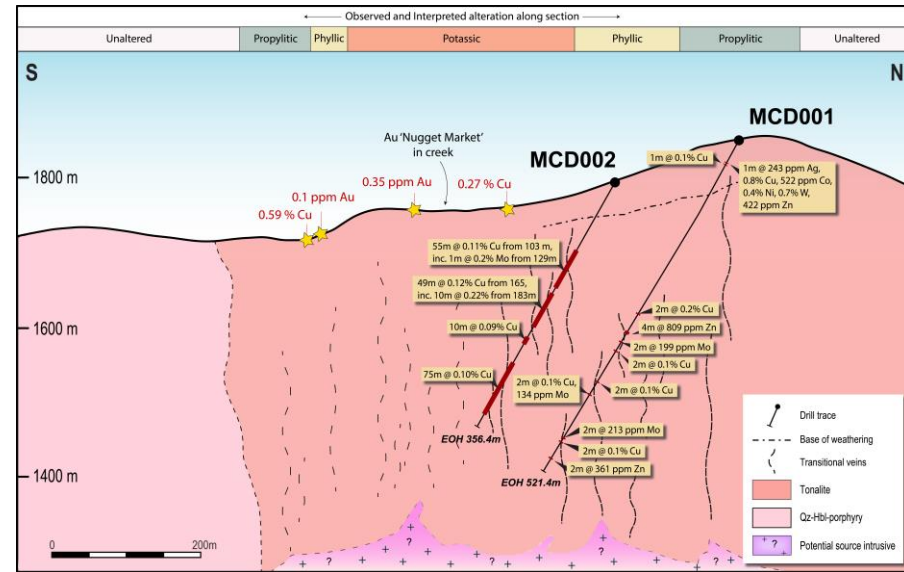


# MONGAE CREEK

- A scout drill programme commenced in 2018. Two drill holes (MCD001 and MCD002) have been completed and assay results have been received.

## MCD001:

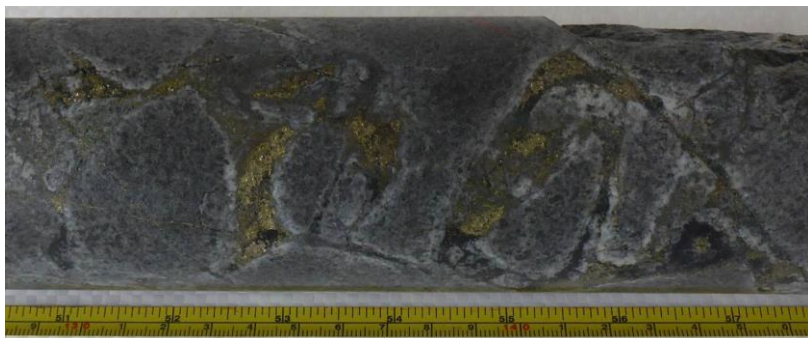
- Mineralisation was intercepted from 38 metres down to the end of hole at 521 metres below surface. The best intercept was 1m @ 243 g/t Ag, 0.8 % Cu, 522 ppm Co, 0.4 % Ni, and 0.7 % W from 38 m.
- The frequency of base-metal and Mo-bearing veinlets increases downhole, as do K, Cu, Zn, Mo and Pb grades. This suggests closer proximity to a mineralising fluid source.
- High background levels of Cu (100 - 1000 ppm) were encountered over the entire length of the hole.
- The holes display chloritic and propylitic alteration, characteristic of a porphyry Cu-Au system.
- The Company is currently integrating petrographic and mineralogical data from this drill hole to better vector towards grade in the Mongae Creek porphyry system.



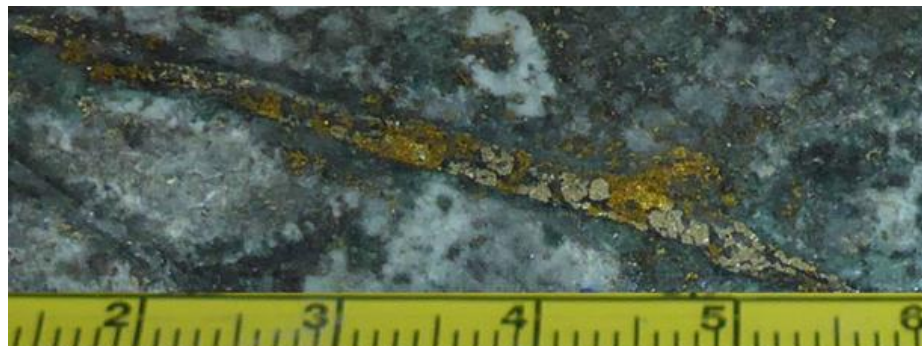
# MONGAE CREEK

## MCD002:

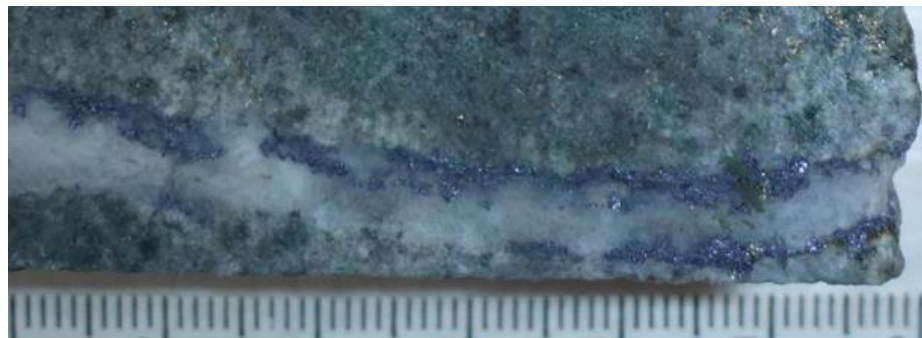
- **Intercept: 93 m @ 0.12% Cu, 0.015 ppm Au, 63 ppm Mo.**
- Mineralisation hosted in A-, B-, M- and D-type porphyry veins.
- Hosted in variably brecciated and altered tonalite.
- Significant increase in grade of Cu-mineralisation in MCD002 that that intersected by MCD001 which suggests drilling is moving towards the core of the system.



MCD002, 189.80-189.98m: Brecciated tonalite with chalcopyrite, pyrite, magnetite (black) and quartz cement (HQ Core 63mm diameter; scale: inches and centimetres)



MCD002, 129.18m: Molybdenite selvage on quartz. B-type veins are particularly distinctive of porphyry copper-gold systems (scale: cm)

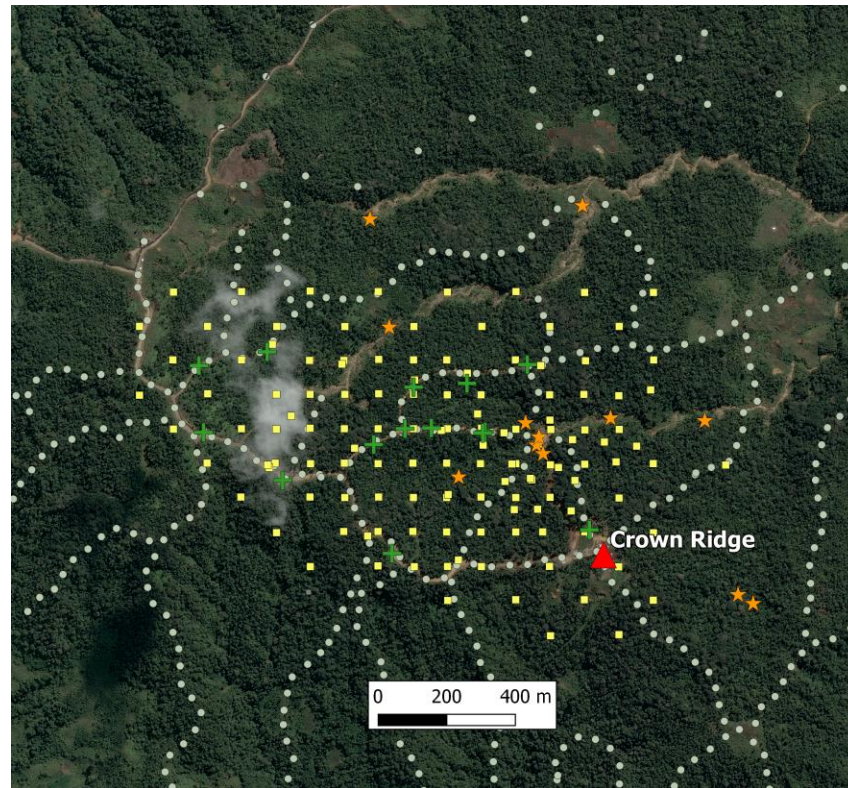


MCD002, 142.00m: Chalcopyrite-pyrite-magnetite-quartz (A-type) vein in hydrothermally-altered tonalite with abundant disseminated magnetite (scale: cm)



# CROWN RIDGE

- Coarse, crystalline and dendritic gold is consistently being recovered from streams near the headwaters of the Crown Ridge river system.
- Dendritic gold typically forms when rock fracturing causes flash boiling of gold-bearing fluids. This process can result in extraordinarily high gold grades.
- The dendritic morphology and close association of gold with angular quartz highlight the presence of a nearby, high-grade gold source that is most likely epithermal in nature.
- Gold Mountain's 2016 airborne magnetic survey showed a magnetic low under Crown Ridge and was used to identify priority targets for further exploration work.
- The results of stream sediment sampling, soil sampling, pitting and bulk-sample testing indicate that the hard-rock gold source most likely occurs in a confined area within the headwaters of the river system.
- Coarse platinum is also consistently being recovered from the drainage system.



# CROWN RIDGE

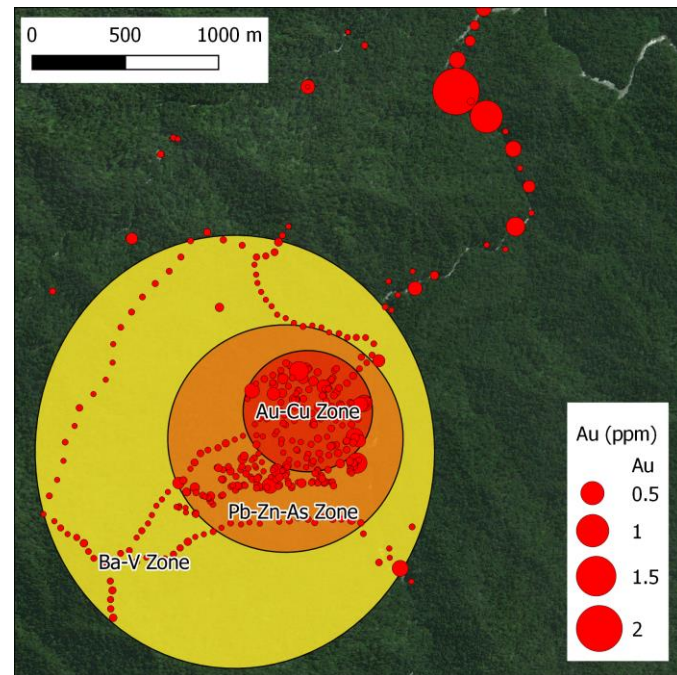
- A 19-hole diamond core drilling campaign totalling 3761.8 m has been completed in June 2018.
- The programme was designed to constrain the local stratigraphy, to obtain samples of hydrothermally altered and mineralised zones for petrographic analysis and to assess the geotechnical properties of the host rock.
- Samples from three drill holes (CRD001, CRD004, CRD005) were submitted for gold assay. Results were mostly <math><0.10\text{ g/t Au}</math>. The best intercept encountered was 1 m @ 0.66 g/t Au from 77 m in hole CRD001.
- Currently, more detailed and focussed surface exploration work is being undertaken to identify outcropping mineralisation and to establish further drill targets.



# SAK CREEK



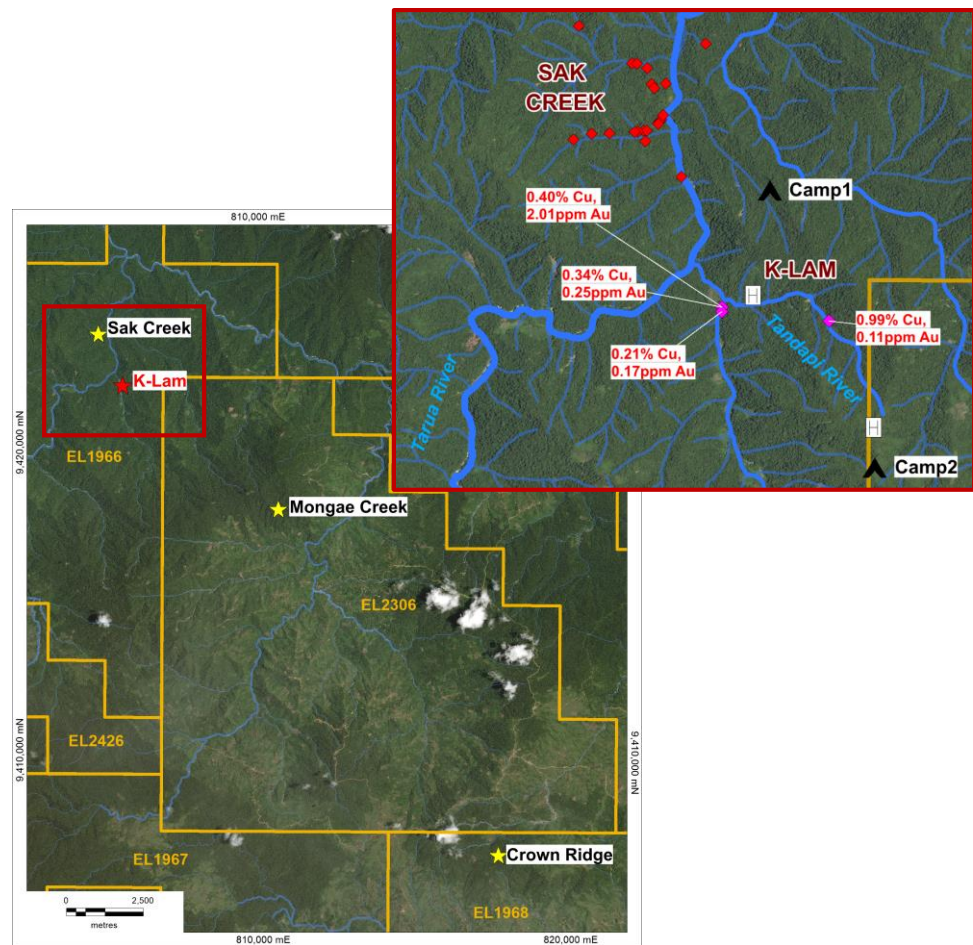
- Sak Creek is located in the valley adjacent to Mongae Creek, Geological reconnaissance of the area has identified mineralisation and alteration styles characteristic of porphyry-style mineralisation.
- Ridge and spur soil sampling at Sak Creek has resulted in identification of three distinct geochemical zones, which are also characteristic of a porphyry system.
- During a mapping campaign of the area between Mongae Creek and Sak Creek, copper and gold mineralisation was discovered over a distance of 7 km.
- These findings highlight the potential for a north-west trending belt with significant mineralisation throughout.
- Further high-resolution mapping and creek sampling is planned to take place at Sak Creek in tandem with exploration at Crown Ridge and Mongae Creek.





# K-LAM DISCOVERY

- K-lam, is located in the valley between Sak Creek and Mongae Creek, a recent reconnaissance programme at this prospect identified features which are indicative of porphyry-style mineralisation
- Elevated copper and gold mineralisation has been found in situ, in narrow copper veins within an altered diorite, outcrops over 30 metres, and is open in all directions.
- These findings highlight the potential for a north-west trending belt with significant mineralisation throughout.

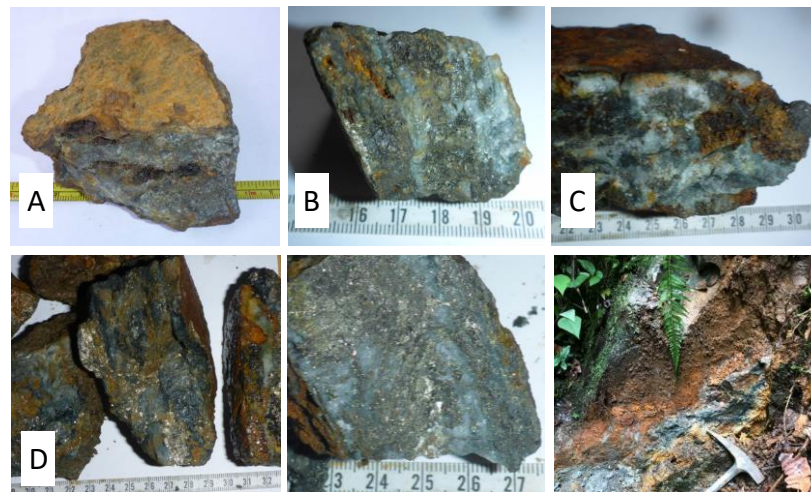


# K-LAM DISCOVERY

- Further high-resolution mapping and creek sampling is planned to link Sak Creek and Mongae Creeks, with detailed trenching of exposed outcrop.



	Au ppm	Cu ppm	Ag ppm	Zn ppm	Pb ppm	S %	As ppm	Material
A	0.11	9920	16.00	434	15.0	>10	163.5	Outcrop
B	0.25	3420	8.25	94	16.3	9.34	78.2	Outcrop
C	2.01	3990	6.78	168	18.3	>10.0	130	Outcrop
D	0.17	2110	5.96	894	170.5	>10.0	422	Outcrop



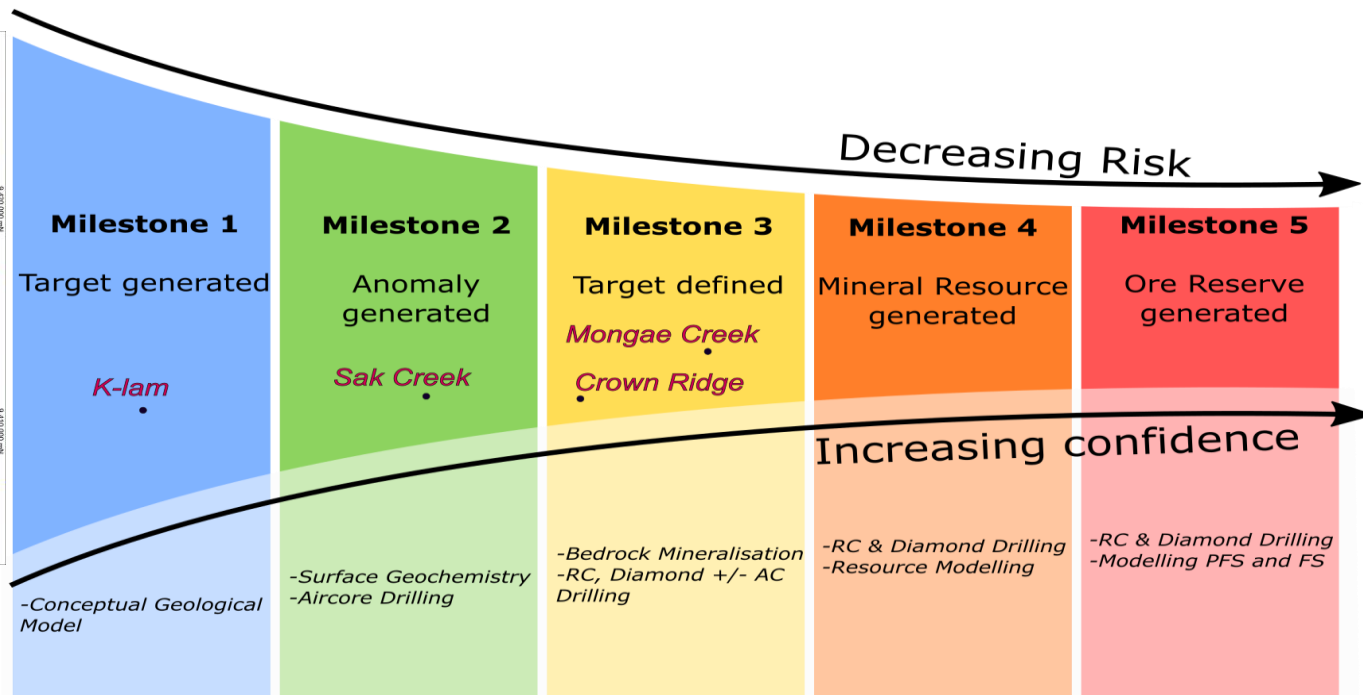
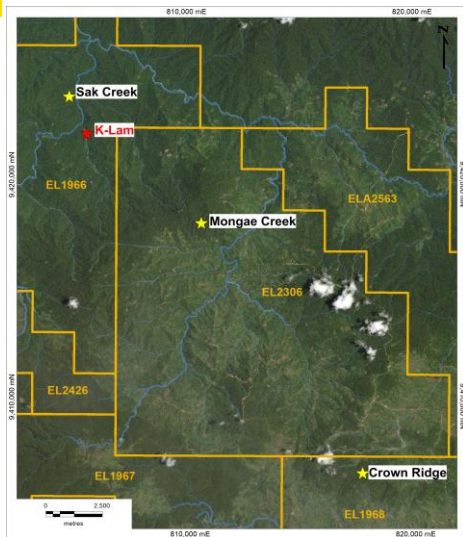
# COMMUNITY ENGAGEMENT

- From the start of exploration work, Gold Mountain has invested in building strong relationships with local communities.
- Maintaining an open dialogue with surrounding tribes and actively working to inform communities about activities.
- Providing community support by building and maintaining infrastructure, installing a first aid post and providing emergency relief.
- Local communities have played an important role in the exploration activities and clan leaders have expressed their desire to continue this collaboration.





# PROJECT PIPELINE



# BUDGET

- \$2M required to complete:
  - The soil programs at Mongae / CR / Sak Creek and possible K-lam, (includes in-fill soils)
  - Mapping, petrology, geochemistry
  - Initial trenching to open up areas of anomalism defined by the soil program
  - Time line: November 2018 through to April 2019
  
- \$3M Diamond drilling
  - Drilling (5000 m to 6000 m) to target the best of the soil / trench anomalies - enough to test the main targets with at least two or three drill holes – timing for this April through to November 2019
  
- \$10M Drilling
  - These funds will be used for resource drill out, commencing in December 2019 or earlier dependent on results from the first phase of drilling – take 12 months to complete

## Timeline

Ground Exploration	Exploration Drilling	Resource Drilling
Soils, trenching, mapping	Mongae, Sak Creek, Crown Ridge	Most advanced project
1 <sup>st</sup> /2 <sup>nd</sup> Quarter 2019	3 <sup>rd</sup> Quarter 2019	4 <sup>th</sup> Quarter 2019

# COMPETENT PERSON'S STATEMENT & REFERENCE TO PREVIOUS RELEASES

## Competent Person's Statement

The information in this report that relates to Exploration Results is based on information compiled by Doug Smith, a Competent Person who is a member of the Australasian Institute of Mining and Metallurgy (AusIMM). Mr Smith is a consultant geologist who is employed in a full-time capacity by Gold Mountain. Mr Smith has sufficient relevant experience that is relevant to the style of mineralisation and type of deposit under consideration and the

activity being undertaken to qualify as a Competent Person as defined in the Australasian Code for Reporting of Exploration Results, Mineral Resources and Ore Reserves 2012. Doug Smith consents to the inclusion in this report of the matters based on his information in the form and context in which it appears.

## Reference To Previous Releases

All Exploration Results referred to in this video have been previously announced to the market in the reports dated 15-11-18, 08-10-18, 28-08-18, 07-08-18, 13-07-18, 12-07-18, 03-07-18, 13-06-18, 17-05-18, 22-03-18, 09-03-18, 05-03-18, 19-12-17, 26-09-17, 27-02-17, 15-02-17, 12-05-15 and 30-01-15 and are available to view and download at [www.goldmountainltd.com.au](http://www.goldmountainltd.com.au). Gold Mountain Limited

confirms that it is not aware of any new information or data that materially affects the information included in the original market announcements. Gold Mountain Limited confirms that the form and context in which the Competent Person's findings are presented have not been materially modified from the original market announcement.

For further information please see our website ([www.goldmountainltd.com.au](http://www.goldmountainltd.com.au))

or contact:

Doug Smith Director Exploration 0419 414 460

Tony Teng Managing Director 0414 300 044

Follow Gold Mountain on Twitter: <https://twitter.com/GoldMountainASX> For future information on information