

**ASX RELEASE**

29 October 2018

GOLD MOUNTAIN RELEASES NEW CORPORATE VIDEO

Gold Mountain Limited, (ASX: GMN) is pleased to announce the release a corporate video profiling its flagship asset, the Wabag project in Papua New Guinea. The video is now available on the Company's [website](#) and via social media sites ([here](#)). The video includes interviews with the senior leadership team describing what makes Wabag a unique Cu-Au asset.

Tony Teng, Managing Director, commented: *"We are pleased to have commissioned this video, it shows our loyal shareholders and investors what this project looks like on the ground and gives great insight into the hard work that is being carried out to unlock value at the project. We're planning to release frequent updates from site to add to the continuous news flow from the various exploration programmes that are now under way."*

--END--

For further information please visit the website www.goldmountainltd.com.au or contact:



Doug Smith
Director Exploration
0419 414 460



Tony Teng
Managing Director
0414 300 044



Follow Gold Mountain on Twitter:

www.twitter.com/GoldMountainASX

Follow Gold Mountain on LinkedIn:

www.linkedin.com/company/goldmountain

Follow Gold Mountain on YouTube:

[YouTube Channel](#)



About Gold Mountain

Gold Mountain holds substantial areas within the fertile Au/Cu-endowed Papuan Mobile Belt that includes world-class mines (Figure 1). Most of the areas within the Exploration Licences (ELs) have never been explored using modern technology. Multiple targets have been identified within the licence area of approximately 2,000 km² (Figure 2). Current exploration focus is on three main prospects:

- Crown Ridge – field programmes have identified part of the catchment area where the source of abundant fine and coarse gold is likely to occur; current exploration working up to hard-rock drilling targets, expected to be of high-grade epithermal nature.
- Mongai Creek – discovery of outcropping porphyry Cu-Au style mineralisation, mapping and stream sampling indicate that there is good potential for a large-tonnage deposit in this area. Initial drilling identified the existence of porphyry-style mineralisation. Results from the drilling and surface geochemical sampling programmes, now underway, will allow the company to better target future drilling.
- Sak Creek – early-stage exploration identified strongly mineralised float samples from an interpreted potential low-sulphidation epithermal gold system; ridge-and-spur soil sampling has narrowed the target area down, and follow-up field activities are being planned.

Large areas remain to be assessed.

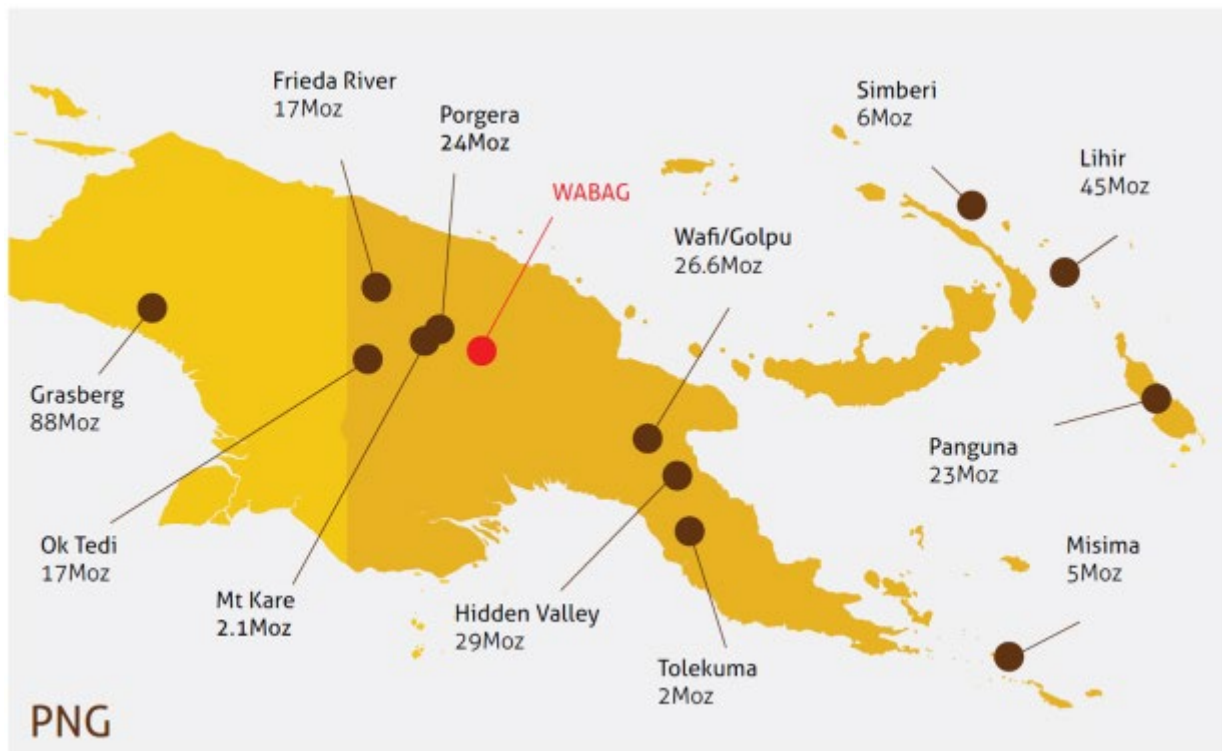


Figure 1. Location of the Wabag Project relative to major world class gold mines in Papua New Guinea

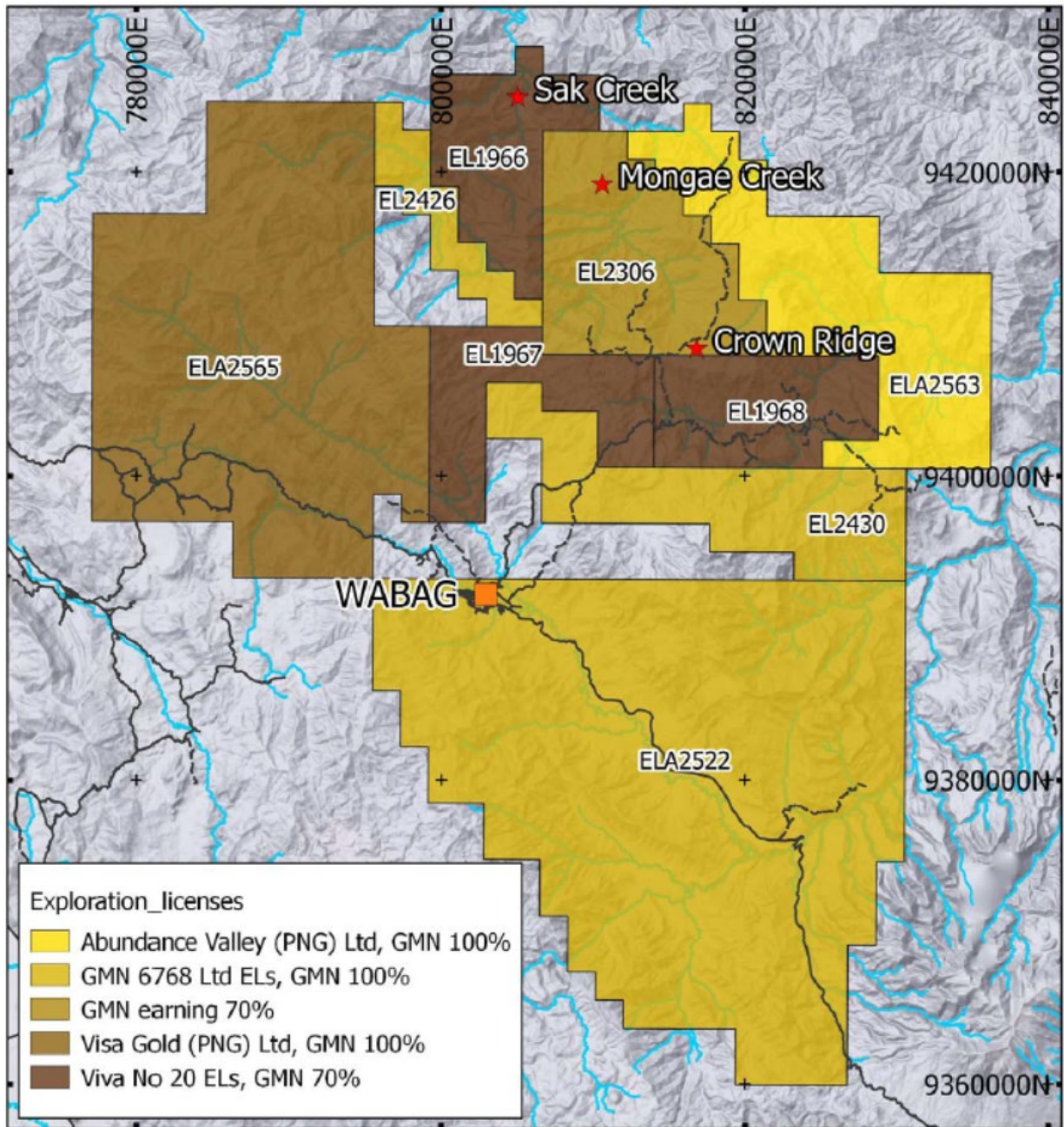


Figure 2. GMN exploration licences cover substantial areas within the fertile, Au/Cu-endowed Papuan Mobile Belt that includes world-class mines