



GOLD MOUNTAIN LIMITED

ASX:GMN

(ABN 79 115 845 942)



Gold Mountain Limited (ASX: GMN)
2016 Annual General Meeting Presentation

Company overview



GOLD MOUNTAIN LIMITED

ASX:GMN

(ABN 79 115 845 942)

GMN Capital Structure

Shares on issue	379,950,222
Options on issue	46,717,858
Market cap at \$0.13	\$49.4m
Cash at bank (as at 30 Sept 2016)	\$1.45m
52 week high	\$0.185
52 week low	\$0.035

Board & Management

Graham Kavanagh
Chairman

Syn Ping (Tony) Teng
Managing Director

Matt Morgan
Exploration Director

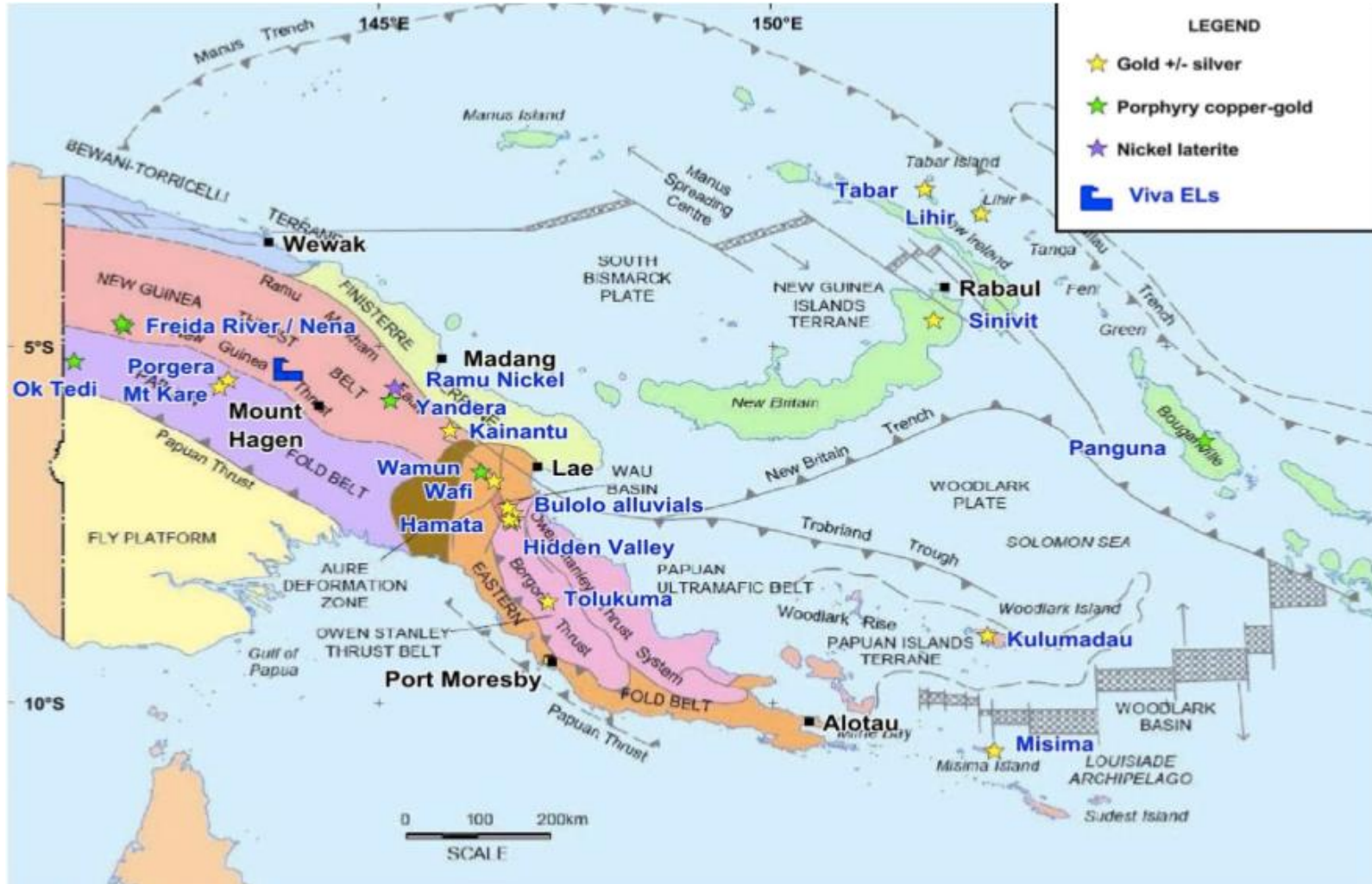
Eric Kam
Company Secretary

Major shareholders

	No. of shares	% held
Suwardi	31,850,000	8.41
G H A Development Pty Ltd	22,013,694	5.81
Ghinan Mohamad Sani	19,016,667	5.00
Irene Teng	18,943,311	4.98
HSBC Custody Nominees	16,812,403	4.43
Top 20	219,012,608	57.64

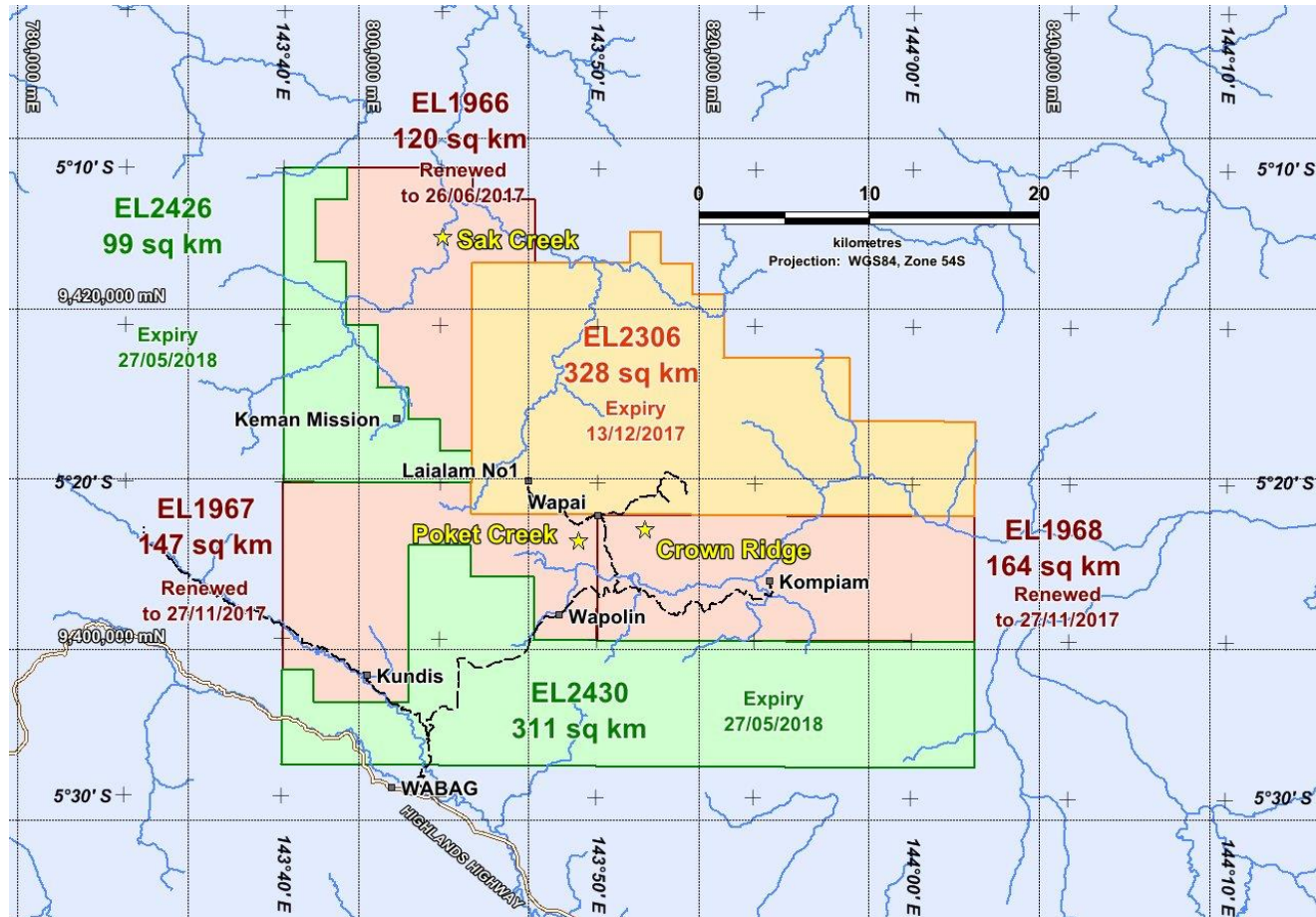


Precious metals exploration and development



Building a portfolio of world class gold assets in a region hosting well known gold deposits

Papua New Guinea – project overview



Unlocking significant value through highly prospective tenements in the Enga province, PNG

GMN has potential to hold ~1169² of tenements with significant mineralisation

Flagship Crown Ridge Gold Project highlights



GOLD MOUNTAIN LIMITED

ASX:GMN

(ABN 79 115 845 942)

Crown Ridge provides 164km² of highly prospective exploration area

Initial trenching program recovered significant visible gold from 3D Magnetic targets

Exclusivity agreement with EL2306 provides 100% access to prospective 'interpreted crater rim' geology

Decision to fast track Bulk Sampling provides Company further confidence in project area

Significant free gold recovered from ongoing bulk sampling program – 35 of 37 completed pits show free gold at depths of 2 – 4 metres



Tenement summary



EL No.	Holder	GMN interest	Location	Area (sq km)	Expiry
EL1966	Viva No.20 Limited	20% - 70%	Enga Province, PNG	120	26/06/2017
EL1967	Viva No.20 Limited	20% - 70%	Enga Province, PNG	147	27/11/2017
EL1968	Viva No.20 Limited	20% - 70%	Enga Province, PNG	164	27/11/2017
EL2426	GMN6768 (PNG) Ltd	100%	Enga Province PNG	99	27/05/2018
EL2430	GMN6768 (PNG) Ltd	100%	Enga Province, PNG	311	27/05/2018
EL5939	Capital Mining Ltd	50%-100%	Cowarra, NSW	19.5	29/04/2015 ¹
EL6922	Gold Mountain Ltd	100%	Dalton, NSW	19.5	23/10/2017
EL8263	Gold Mountain Ltd	100%	Grenfell, NSW	11.4	30/04/2017
EL2306	Khor Eng Hock & Sons (PNG) Ltd	Exclusivity to acquire	Enga Province, PNG	328	13/12/2017

¹Application for renewal of EL5939 was lodged with NSW TIRE on 23 April 2015. GMN is in the process of acquiring 100% equity in the tenement

FY2016 milestones



GOLD MOUNTAIN LIMITED

ASX:GMN

(ABN 79 115 845 942)

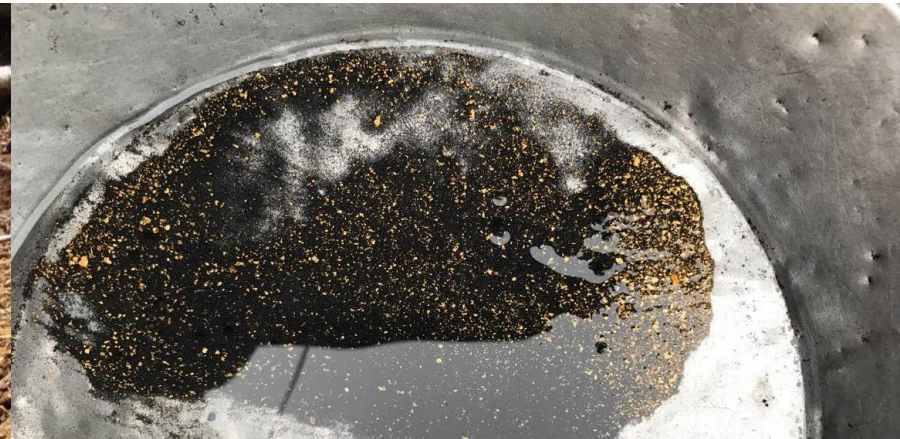
Highly encouraging exploration results across PNG project suite – particularly flagship Crown Ridge gold project

Ground Magnetics Survey completed – reinforcing hydrothermal alteration and mineralisation across diatreme – conceptual source of the mineralisation is a deep-seated porphyry system

Renewal of three PNG Wabag tenements for additional two years – EL1966, EL1967 and EL1968

External Geophysical Consultant engaged to further model promising results – identifies similarities to Porgera Mine (75 kilometres west of project suite)

Divestment of non-core assets (Peru and NSW) to focus on unlocking significant potential of PNG project



Poised to unlock significant value in FY2017



GOLD MOUNTAIN LIMITED

ASX:GMN

(ABN 79 115 845 942)

Successful completion of \$2.4m capital raise by issue of ~57m shares at \$0.042 per share to rapidly advance exploration activities at flagship Crown Ridge Gold Project

Commencement of trenching program at Crown Ridge – targeting 35 shallow anomalous targets at ~70m depth derived from 3D Magnetic targets

Exclusivity Agreement to acquire EL2306 – highly prospective, 328km² tenement providing Company access to promising ‘interpreted crater rim’ geology

Visible gold confirmed from initial 92m of trenching at Crown Ridge provides company to fast track bulk sampling program - program of 94 test pits ongoing at EL1968

Significant free gold recovered from ongoing bulk sampling program – 35 of 37 completed pits show free gold at depths of 2 – 4 metres



Contact

Tony Teng
Managing Director
0414 300 044

Matt Morgan
Exploration Director
0427 518 077

Suite 2501, Level 25, St Martins Tower
31 Market Street, Sydney
NSW 2000 Australia
www.goldmountainltd.com.au



GOLD MOUNTAIN LIMITED

ASX:GMN

(ABN 79 115 845 942)





Forward Looking Statement

Whilst based on information from sources considered reliable, Gold Mountain Limited (GMN), its directors, employees and consultants do not represent, warrant or guarantee, expressly or impliedly, that the information in this document and presentation is complete or accurate. To the maximum extent permitted by law, GMN disclaims any responsibility to inform any recipient of this document and presentation of any matter that subsequently comes to its notice, which may affect any of the information contained in this document and presentation.

Competent Person Statement

Statements contained in this report relating to exploration results and potential is based on information compiled by Doug Smith, who is a Member of AusIMM. Doug is a consultant geologist and has sufficient relevant experience in relation to the mineralisation styles being reported on to qualify as a Competent Person as defined in the Australasian Code for Reporting of Identified Mineral Resources and Ore Reserves (JORC Code). Doug Smith consents to the use of this information in this report in the form and context in which it appears